

Inbicon demonstration plant

**Michael Persson, VP Finance & Corporate Affairs
Inbicon (subsidiary of DONG Energy)**

**European Biofuels Technology Platform
3rd Stakeholder Plenary Meeting
Brussels, April 14, 2010**



Inbicon Biomass Refinery™

Agenda

- Demonstration plant in Kalundborg, DK
- Technology
- Commercialisation
- EU funding

Inbicon Biomass Refinery™

Demo Plant in Kalundborg 7. January 2009



Inbicon Biomass Refinery™

Demonstration Plant in Kalundborg NOW



Inbicon Biomass Refinery™

Inauguration in November 2009



Inbicon Biomass Refinery™

Inauguration of the Demonstration Plant



Inbicon Biomass Refinery™

Inauguration of the Demonstration Plant



Inbicon Biomass Refinery™

Inauguration of the Demonstration Plant



Inbicon Biomass Refinery™

Inauguration of the Demonstration Plant



Inbicon Biomass Refinery™

Inauguration of the Demonstration Plant



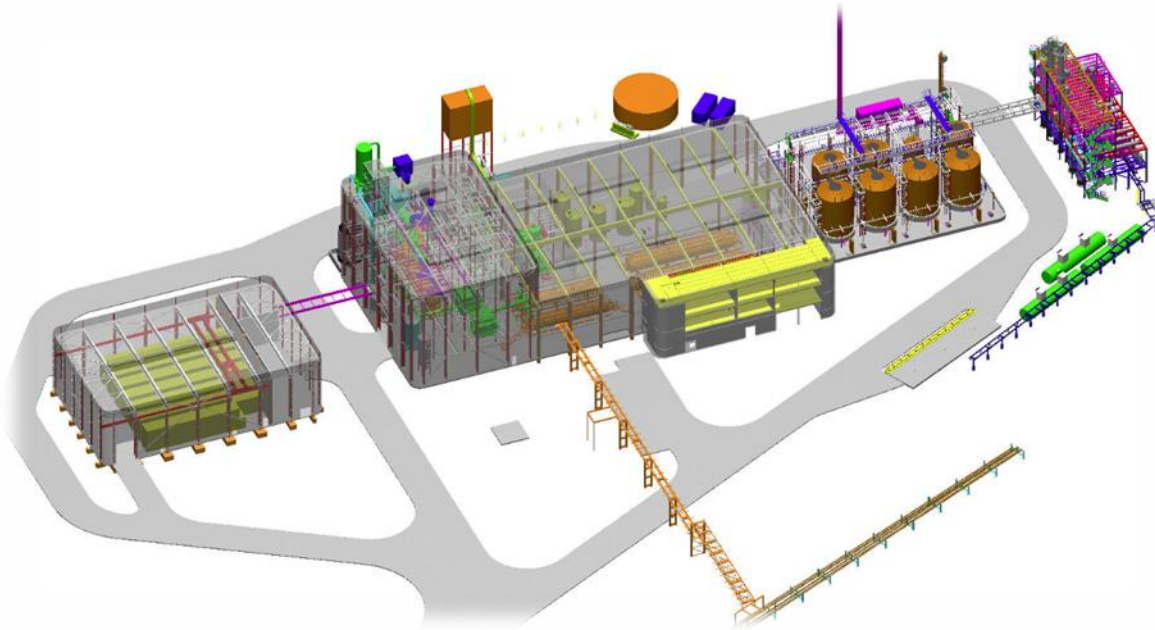
Inbicon's proven technology: Demonstration Plant 2010 – 100 T/day

Input:
30,000 t wheat straw

Output:
5.4 mill. l ethanol
13,100 t lignin pellets
11,250 t C5-molasses

Enzyme suppliers:
Danisco Genencor
Novozymes

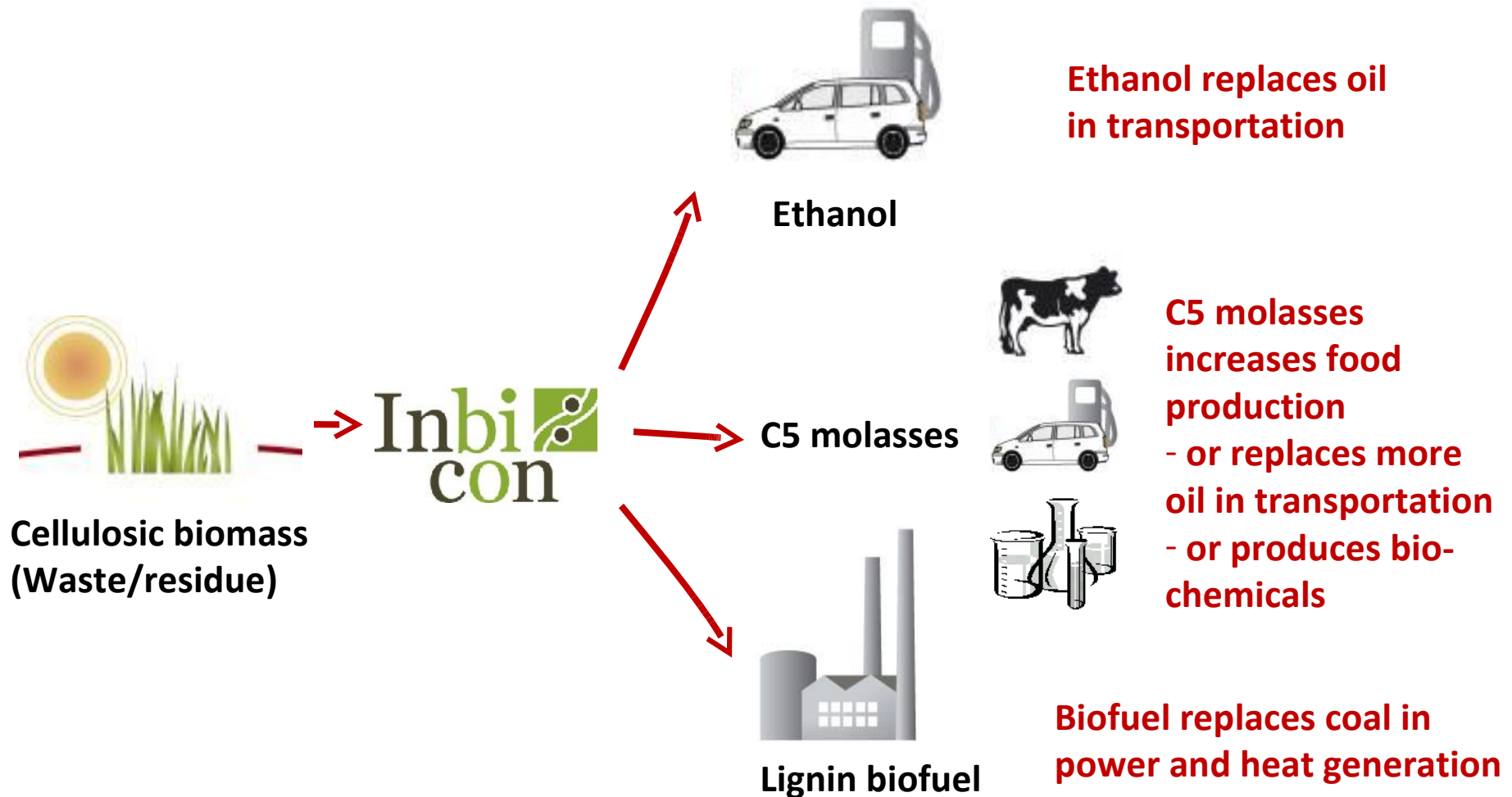
Investment:
€53 mill., incl.
€10 mill. DK gov't
support



Demonstration
supported with €9.1
mill by EU 7th FP under
Kacelle project

Inbicon Biomass Refinery™

Our Goal is Optimal Use of Biomass



Inbicon Biomass Refinery™

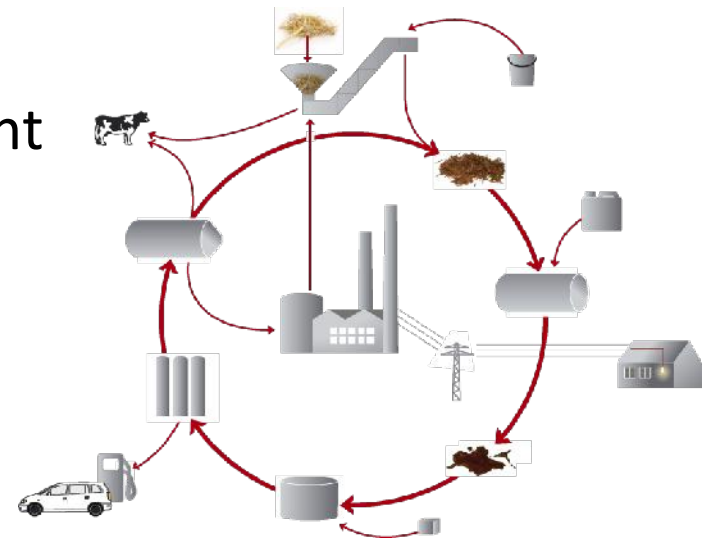
Multiple Feedstocks Tested, Wheat Straw Optimised



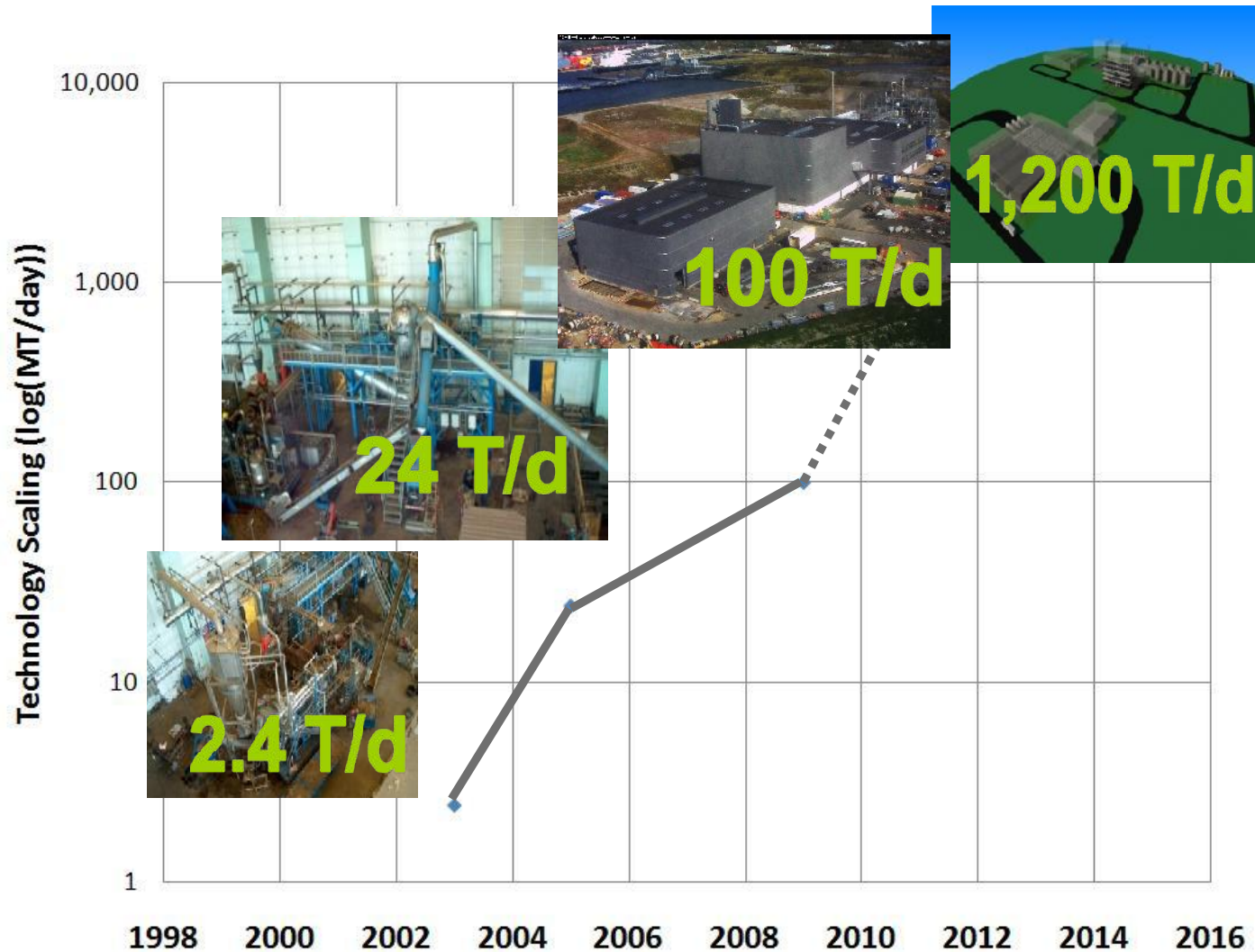
Inbicon Biomass Refinery™

Advantages of the Technology

- Simple process → based on only water, enzymes and yeast
- High dry matter in all process streams
→ saves water and energy
- Low enzyme consumption
- Integration advantages with power plant
- Integrated contamination control
- CO₂ reduction of 85%

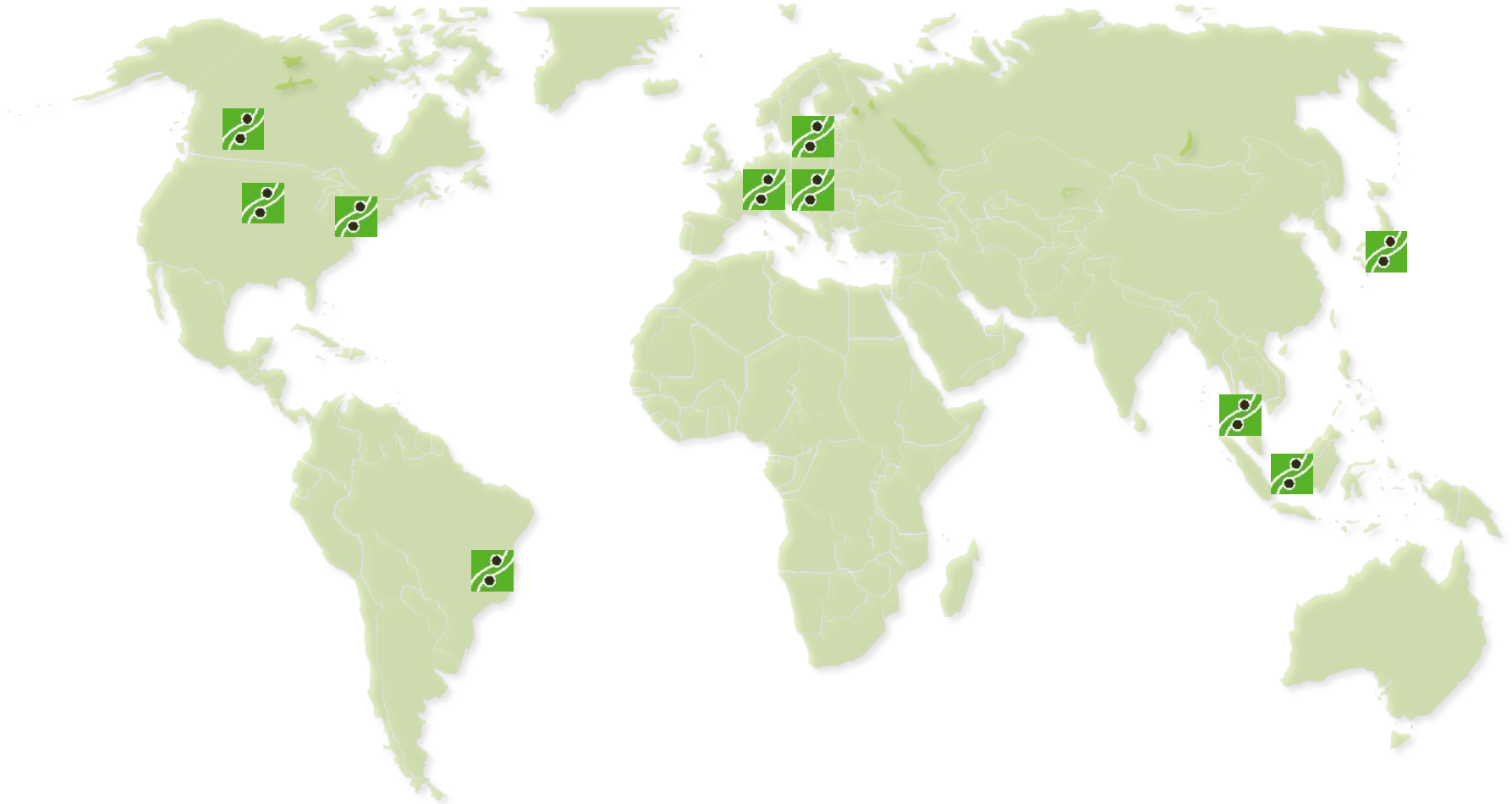


Inbicon's proven technology: Gradual Up-Scaling – Key to Success



Inbicon Biomass Refinery™

Global project developments



Inbicon's proven technology:

How did it all start?

Late 90'ies: First ideas of combining ethanol and power production

2002-06: EU-project (IBUS)

2003: First pilot plant

2005: Second pilot plant

2007: Inbicon A/S established - DONG Energy 100 % owner

2009: Opening of demonstration plant

2010: First license contract

Approx. 60 employees



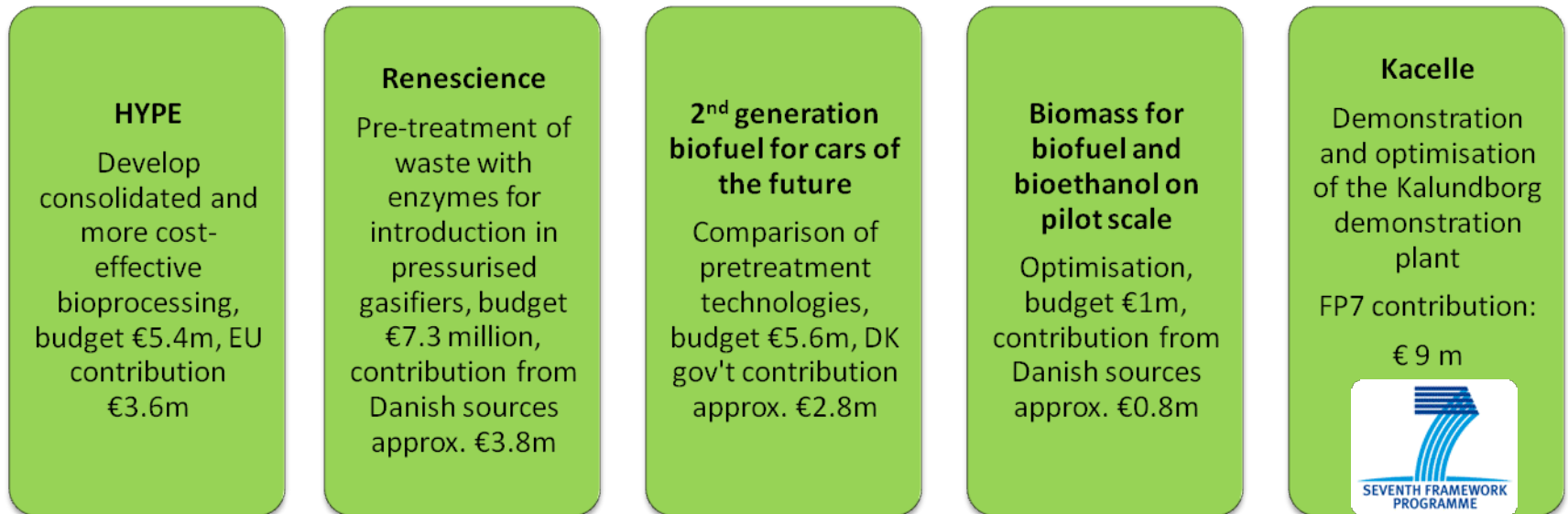
Inbicon Biomass Refinery™

Success story in EU funding projects

10 X multiplication effect of original EU investment:



New projects based on the initial project:





Making ethanol work for the world™

MIPER@inbicon.com

www.inbicon.com