

## MAPPING BIOENERGY R&I PROJECTS

Building an enabling framework at policy and investment level is crucial to enhance the development and deployment of bioenergy and renewable fuels in Europe. As part of its strategy to support the execution of Implementation Plan of SET Plan Action 8 - *Bioenergy and Renewable Fuels for Sustainable Transport (IP8)*, SET4BIO pursues an active involvement of all the key stakeholders to promote coordination and best practices.

In this context the first step consisted in a **mapping** of the most important ongoing and recently finished R&I activities deployed at European and national level, that will enable the realization of the IP8.

For each project, the most relevant surveyed data consists of:

- General information** (name, period, coordinator...)
- Associated R&I activity IP8 and Technology Readiness Level (TRL)**
- Funding sources and schemes, type of instrument and budgets**

Currently, the survey has mapped out:

**201** projects funded nationally among **10** countries

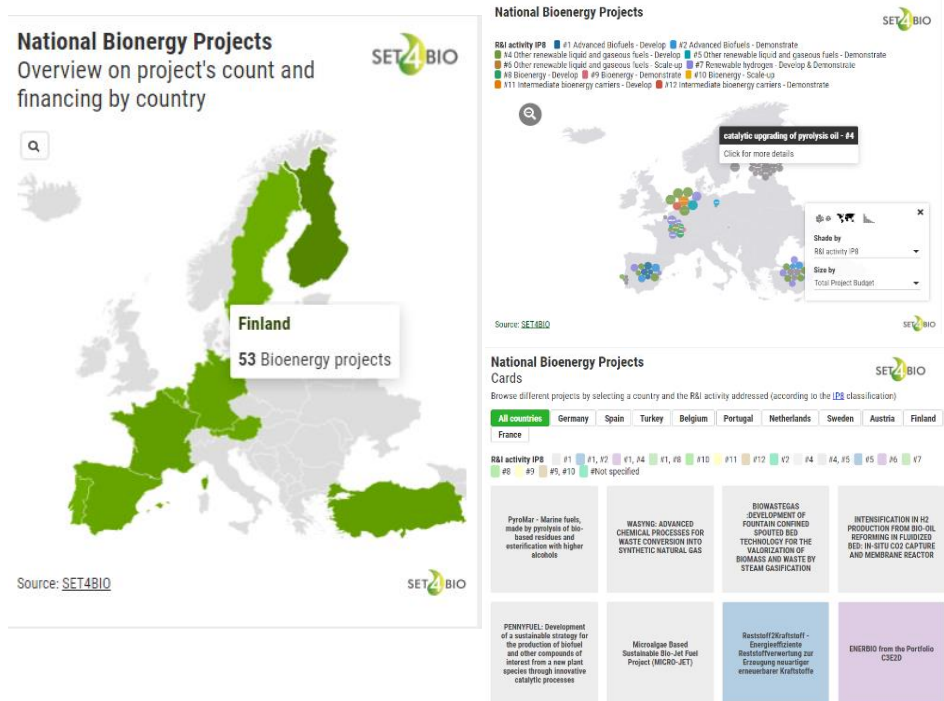
**41** collaborative EU projects mainly funded through Horizon 2020

## The interactive map of Bioenergy R&I Projects

This interactive map represents an overview of **bioenergy R&I projects** funded nationally or at EU-level among countries belonging to the IP8 Working Group (IWG8).

It was built on the base of data collected through the survey, with the aim to **improve the accessibility to information** through a dynamic visualization of data.

[Explore the map](#)





Projects are browsable by **multiple criteria** (country, project name, R&I activity...)



Research by country can also be made by clicking directly on the corresponding area on the map



All **detailed information** available on each project is displayed in popups and panels



This map is a **work in progress**, and it is expected to be updated and implemented along with further database development

If you want **your project to be present in our database**, to correct or update information, please contact [info@set4bio.eu](mailto:info@set4bio.eu).

## References

[Mapping of national bioenergy projects](#)

[D1.1 Report on the state of play of the SET Plan IP8 SINTEF](#)



SET4BIO *Renewable Fuels And Bioenergy For A Low-Carbon Europe - accelerating the implementation of the SET Plan* is a project funded by the Horizon 2020 programme of the European Union to support the full execution of the Implementation Plan of SET Plan Action 8 - Bioenergy and Renewable Fuels for Sustainable Transport.

Started in March 2020 with a duration of three years, the project is carried out by a consortium of six partners from six countries, coordinated by RISE Research Institutes of Sweden (SE).

