



European
Commission



The Common Agricultural Policy and Feedstock Mobilisation

Markus Holzer

**Directorate for Agriculture
and Rural Development
European Commission**

Brussels, 6 February 2013

Agenda



- **The Common Agricultural Policy (CAP) and renewable energy**
- **How to facilitate supply of waste, residues and non-food raw material for the purposes of the bioeconomy?**
- **Relevant CAP/RDP measures**
- **Sustainability and competition issues**
- **Further work on sustainable extraction rates**

The CAP and renewable energy

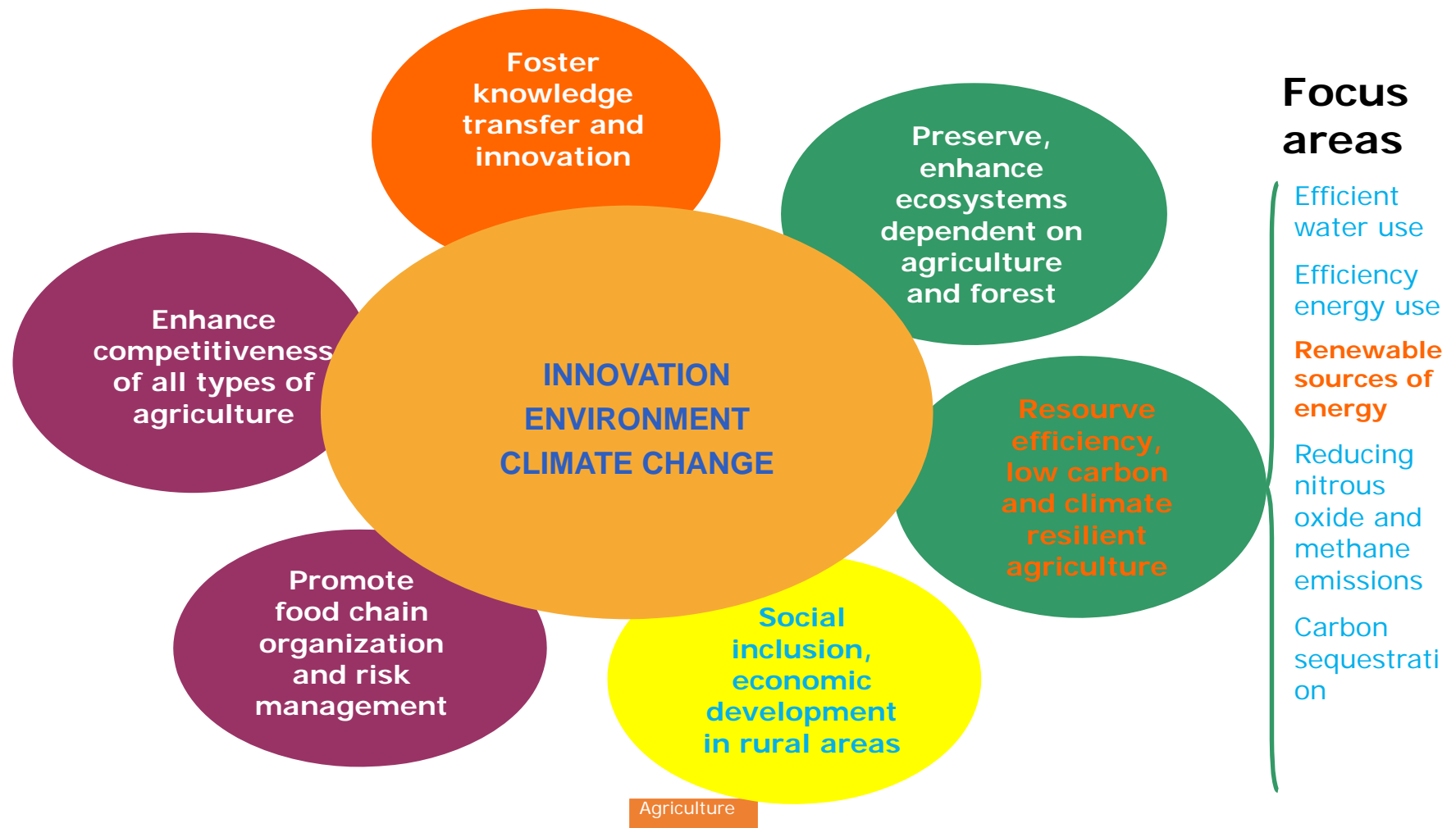


- *Agriculture and forestry are key providers of biomass*
- *Biomass use contributes to EU objectives on renewable energy, bioeconomy and de-carbonisation of the economy*
- *Rural economies benefit from sustainable utilisation of biomass*
- *RD policy to enable rural areas to benefit from RE technology, including advanced biofuels in particular by facilitating the supply of wastes, residues and non-food raw material for the purposes of the bioeconomy.*

Strategic priorities for rural development policy



Target setting for each focus area:



Key RD measures for Focus Area 5c



Facilitating the supply and use of renewable sources of energy, of byproducts, wastes, residues and other non food raw material for purposes of the bio-economy

| Article RD Regulation | Measure title |
|-----------------------|---|
| Art 15 | Knowledge transfer and information actions |
| Art 16 | Advisory services, farm management and farm relief services |
| Art 18 | Investments in physical assets <i>(note: including energy supply infrastructure)</i> |
| Art 20 | Farm and business development <i>(note: including investments in renewably energy)</i> |
| Art 21 | Basic services and village renewal in rural areas ← |
| Art 23 | Afforestation and creation of woodland |
| Art 24 | Establishment of agro-forestry systems |
| Art 25 | Prevention and restoration of damage to forests from forest fires and natural disasters |
| Art 26 | Investments improving the resilience, environmental value and climate contribution of forest ecosystems |
| Art 27 | Investments in new forestry technologies and in processing and marketing of forest products |
| Art 36 | Co-operation |



How to facilitate supply of waste, residues and non-food raw material for the purposes of the bioeconomy?

- *No direct support for production possible – direct payments are largely decoupled*

Direct policy support to ensure the effective working of the supply chain may not be required (IEEP, 2012, MOBILISING CEREAL STRAW IN THE EU TO FEED ADVANCED BIOFUEL PRODUCTION)

- *Existing barriers could be resolved through the normal functioning of the market if advanced biofuels were to increase demand*
- *Competition issue with current uses of residues*

Relevant CAP measures



- *Support for:*
 - *Investments & Infrastructure (cf. art 18-21)*
 - *Training*
 - *Innovation: European Innovation Partnership for Agricultural Production and Sustainability*
- *Environmental safeguards (GAEC):*
 - *Retention of landscape features, biodiversity, water, ...*
 - *Soil protection (maintain soil organic matter, soil cover, erosion, protection of carbon rich soils)*

Sustainability issues



- ***Environmental risks***

- *to avoid soil organic matter losses, reduction of soil organic carbon stocks ?*
- *to retain a minimum percentage of residues in soils for crops and forests grown for bioenergy ?*
- ***Further work needs to be done to set such minimum percentage values; ensure more accurate calculations on the availability of excess straw for different purposes***

Competition issues:

- *E.g. competitive straw uses for animal bedding*

Further work on sustainable extraction rates



Scarlat et. Al, 2013 [1]:

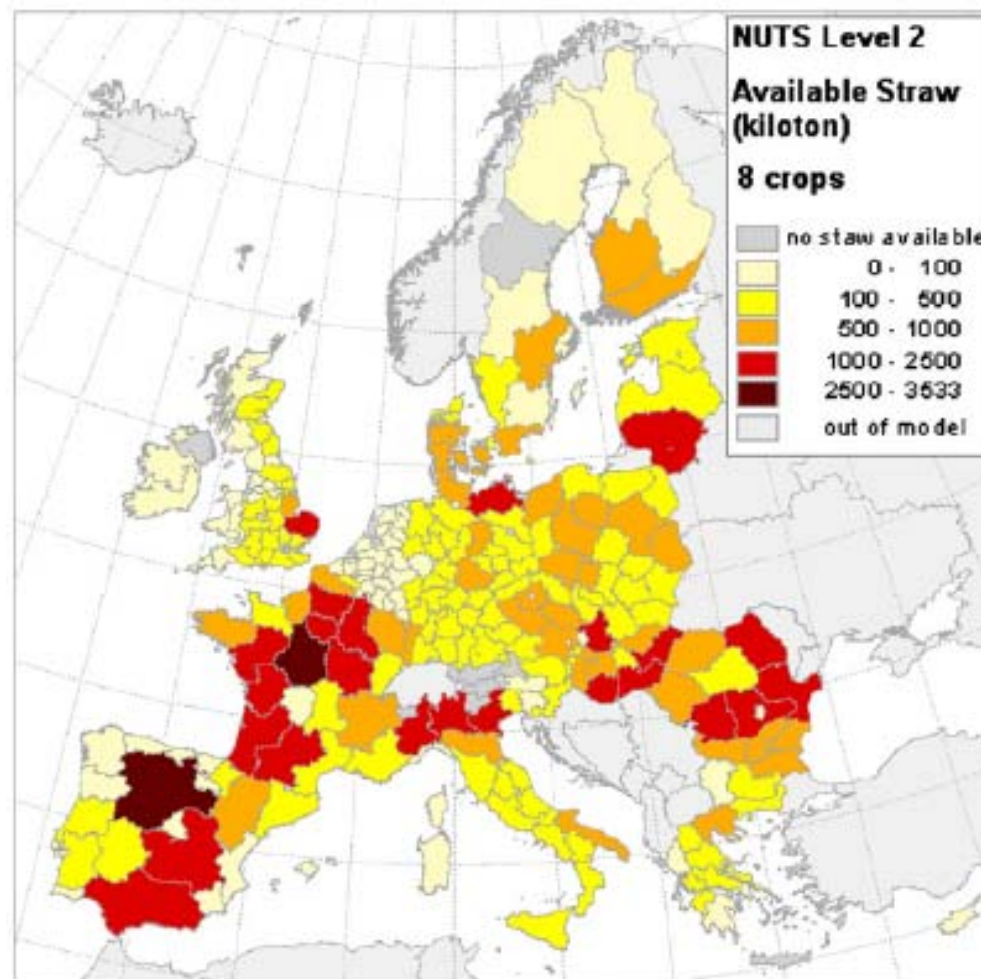
- *Geographical assessment of potential bioenergy production in the EU-27 from residues of eight agricultural crops [*]*
- *Give a clear, geographical overview of the potentially available resources of main arable farming crops in Europe, and to provide a methodology and dynamic model for optimal localization of straw-fed power-plants.*
- ***Environmental constraints and competitive use from farming were considered in methodology***

[*] straw and residues available from eight crops
(wheat, barley, rye, oat, maize, rice, rapeseed and sunflower)

EU-27: sustainably collectable and available residues for energy use ?

European
Commission

- *Retain a minimum percentage of residues in soils for crops and forests grown for bioenergy*
- *On average (EU-27), 42% of produced residues would be sustainably collectable*
- *Higher rates in Eastern Europe (HU 46% is the max), followed by IT, FR, DE, AT, PL.*
- *On average 83% would be left after taking into account also competition issues .*



Scarlat et.al (JRC), 2013

Food-fuel competition



- *Moving to advanced biofuels and other RE technologies in transport has the potential to reduce competition with food production and impacts on the environment*
- *Commission ILUC proposal:*
 - Limit contribution to RE targets by biofuels from food crops to 5%
 - Phasing out of 1G biofuels beyond 2020
- *Food-based biofuels projected to remain important over the next decade but are likely to decline thereafter.*



Thank you

For further information

The CAP after 2013

http://ec.europa.eu/agriculture/cap-post-2013/index_en.htm

Commission Communication 'The CAP towards 2020'

http://ec.europa.eu/agriculture/cap-post-2013/communication/index_en.htm

Impact assessment

http://ec.europa.eu/agriculture/analysis/perspec/cap-2020/index_en.htm

Legal proposals

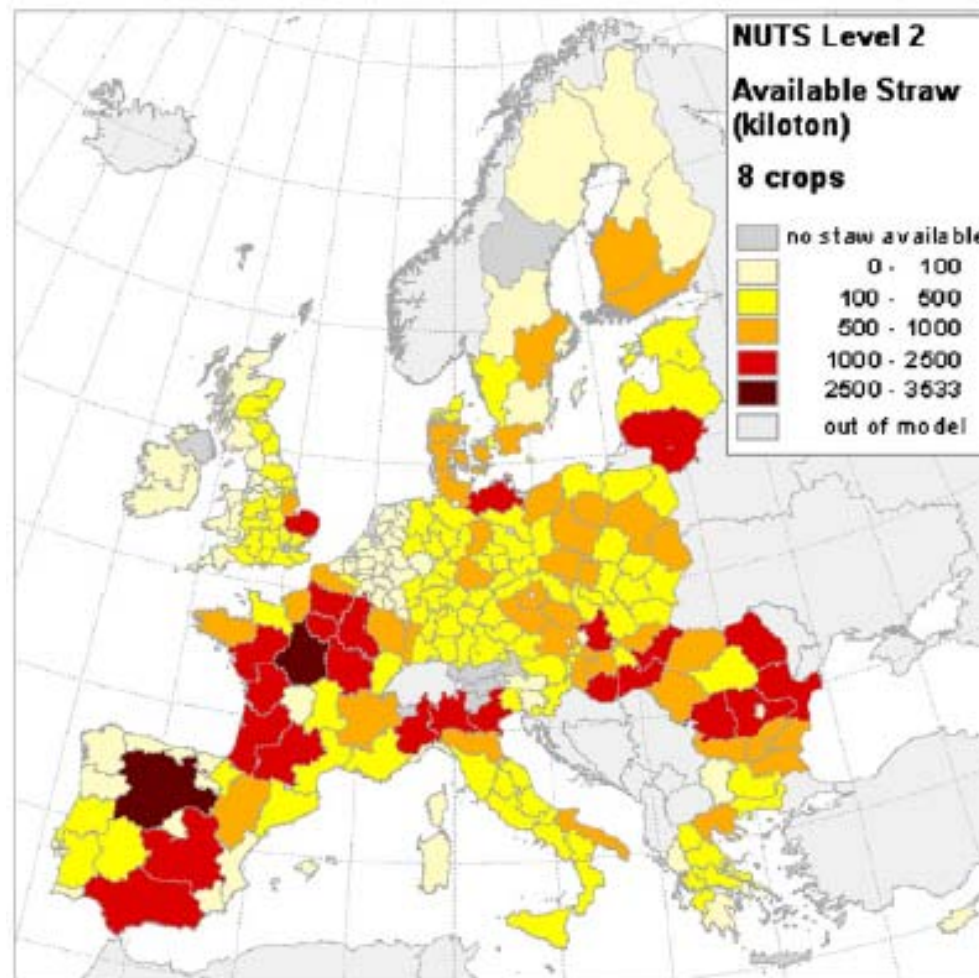
http://ec.europa.eu/agriculture/cap-post-2013/legal-proposals/index_en.htm

Annex: EU-27: sustainably collectable and available residues for energy use

European Commission

Scarlat et.al, 2013

| 1000 t | Produced | Collectable (C) | Available (A) | A to C |
|--------|----------|-----------------|---------------|--------|
| HU | 14373 | 6544 | 6299 | 96% |
| BG | 7716 | 3370 | 3185 | 95% |
| SK | 3809 | 1651 | 1530 | 93% |
| CZ | 8206 | 3433 | 3164 | 92% |
| RO | 19199 | 8751 | 7927 | 91% |
| FI | 4352 | 1755 | 1588 | 90% |
| LT | 3022 | 1232 | 1099 | 89% |
| LV | 1297 | 527 | 464 | 88% |
| PL | 22332 | 9221 | 8061 | 87% |
| SE | 5034 | 2033 | 1767 | 87% |
| FR | 59569 | 25627 | 22242 | 87% |
| DE | 43565 | 18205 | 15643 | 86% |
| EE | 738 | 302 | 259 | 86% |
| IT | 20693 | 9328 | 7906 | 85% |
| DK | 8520 | 3449 | 2923 | 85% |
| AT | 4303 | 1895 | 1525 | 80% |
| ES | 24049 | 10229 | 7845 | 77% |
| EL | 4969 | 2177 | 1549 | 71% |
| PT | 1367 | 634 | 437 | 69% |
| SI | 481 | 218 | 135 | 62% |
| LU | 143 | 59 | 30 | 51% |
| UK | 20441 | 8372 | 4201 | 50% |
| BE | 2298 | 967 | 419 | 43% |
| NL | 1472 | 609 | 99 | 16% |
| CY | 117 | 47 | 4 | 9% |
| IE | 1812 | 727 | 10 | 1% |
| MT | 13 | 5 | 0 | 0% |
| EU-27 | 283890 | 121367 | 100311 | 83% |



83% left after taking into account competition issues:
42% sustainably collectable